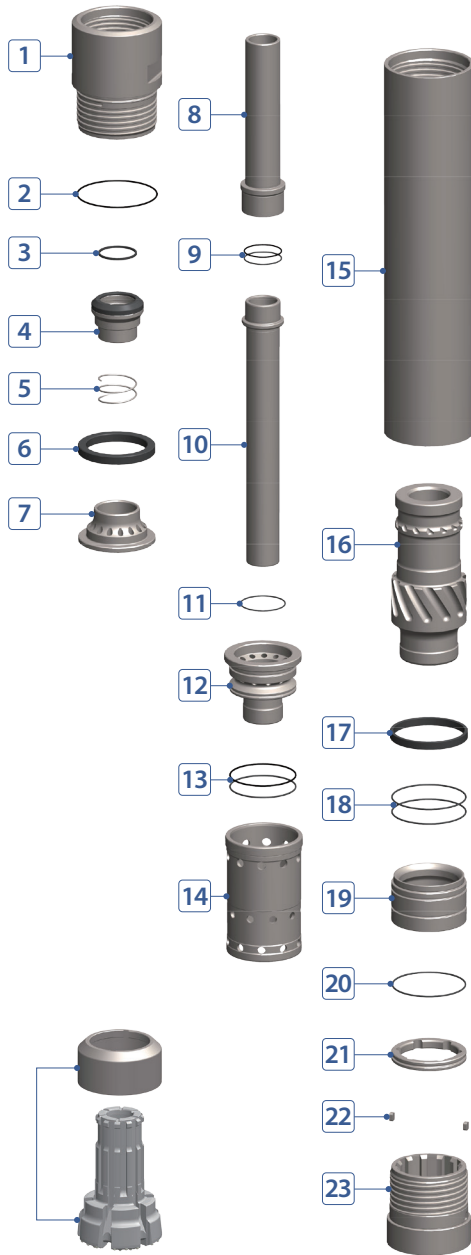


RC HAMMER & BIT

WRC150 REVERSE CIRCULATION HAMMER



COMPONENT PART



No.	DESCRIPTION	Q'TY	PART #
1	Back Head (Top Sub)	1	R150-06-E01000
2	Back Head O-Ring	1	R150-06-E02000
3	Air Check Valve Seal	1	R150-06-E03000
4	Air Check Valve (Steel)	1	R150-06-E06000
5	Air Check Valve Spring	1	R150-06-E07000
6	Make-Up Ring (Buffering)	1	R150-06-E12000
7	Air Guide	1	R150-06-E13000
8	Sample Tube Top for Wear	1	R150-06-E16000
9	Sample Tube Top for Wear O-Ring	2	R150-06-E17000
10	Sample Tube Top Bottom for Wear	1	R150-06-E18000
11	Air Distributor Inner O-Ring	1	R150-06-E19000
12	Air Distributor	1	R150-06-E20000
13	Air Distributor Outer O-Ring	2	R150-06-E21000
14	Cylinder	1	R150-06-E28000
15	Wear Sleeve	1	R150-06-E25000
16	Piston	1	R150-06-E26000
17	Piston Stop Ring (Buffering)	1	R150-06-E60000
18	Bearing O-Ring	2	R150-06-E30000
19	Bearing	1	R150-06-E29000
20	Bit Retainer O-Ring	1	R150-06-E32000
21	Bit Retainer	1	R150-06-E33000
22	Lockling Key	2	R150-06-E36000
23	Chuck (Drive Sub)	1	R150-06-E37000
*	Shroud	1	-
*	WRC150 Bit	1	-

HAMMER SPECIFICATIONS

Length (w/o drill bit)	80"	2,032 mm
Outside Diameter	14.56"	370 mm
Weight	2,304 lbs.	1,045 kg
Piston Weight	452 lbs.	205 kg
Hole Size	15" ~ 19"	381 ~ 483 mm
Connection	10 3/4 H RC	

AIR CONSUMPTION CHART

