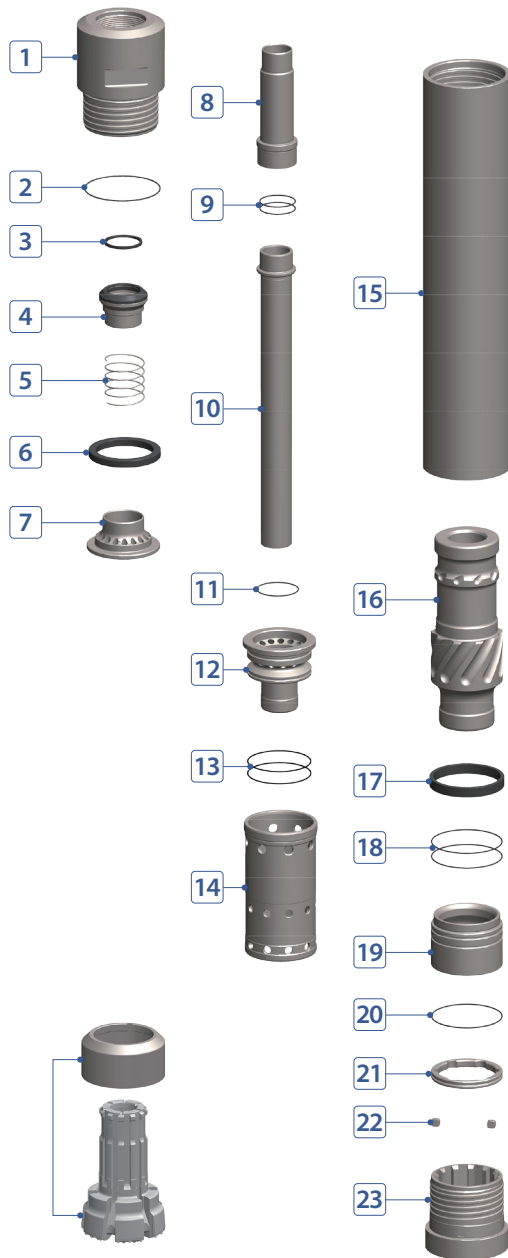


# RC HAMMER & BIT

## WRC120 REVERSE CIRCULATION HAMMER



### COMPONENT PART



No.	DESCRIPTION	Q'TY	PART #
1	Back Head (Top Sub)	1	R120-06-E01000
2	Back Head O-Ring	1	R120-06-E02000
3	Air Check Valve Seal	1	R120-06-E03000
4	Air Check Valve (Steel)	1	R120-06-E06000
5	Air Check Valve Spring	1	R120-06-E07000
6	Make-Up Ring (Buffering)	1	R120-06-E12000
7	Air Guide	1	R120-06-E13000
8	Sample Tube Top for Wear	1	R120-06-E16000
9	Sample Tube Top for Wear O-Ring	2	R120-06-E17000
10	Sample Tube Top Bottom for Wear	1	R120-06-E18000
11	Air Distributor Inner O-Ring	1	R120-06-E19000
12	Air Distributor	1	R120-06-E20000
13	Air Distributor Outer O-Ring	2	R120-06-E21000
14	Cylinder	1	R120-06-E28000
15	Wear Sleeve	1	R120-06-E25000
16	Piston	1	R120-06-E26000
17	Piston Stop Ring (Buffering)	1	R120-06-E60000
18	Bearing O-Ring	2	R120-06-E30000
19	Bearing	1	R120-06-E29000
20	Bit Retainer O-Ring	1	R120-06-E32000
21	Bit Retainer	1	R120-06-E33000
22	Locking Key	2	R120-06-E36000
23	Chuck (Drive Sub)	1	R120-06-E37000
*	Shroud	1	-
	WRC120 Bit	1	-

### HAMMER SPECIFICATIONS

Length (w/o drill bit)	66.7"	1,694 mm
Outside Diameter	11.33"	288 mm
Weight	1,212.5 lbs.	550 kg
Piston Weight	242.5 lbs.	110 kg
Hole Size	12" ~ 15"	305 ~ 381 mm
Connection	7" Matrix	

### AIR CONSUMPTION CHART

