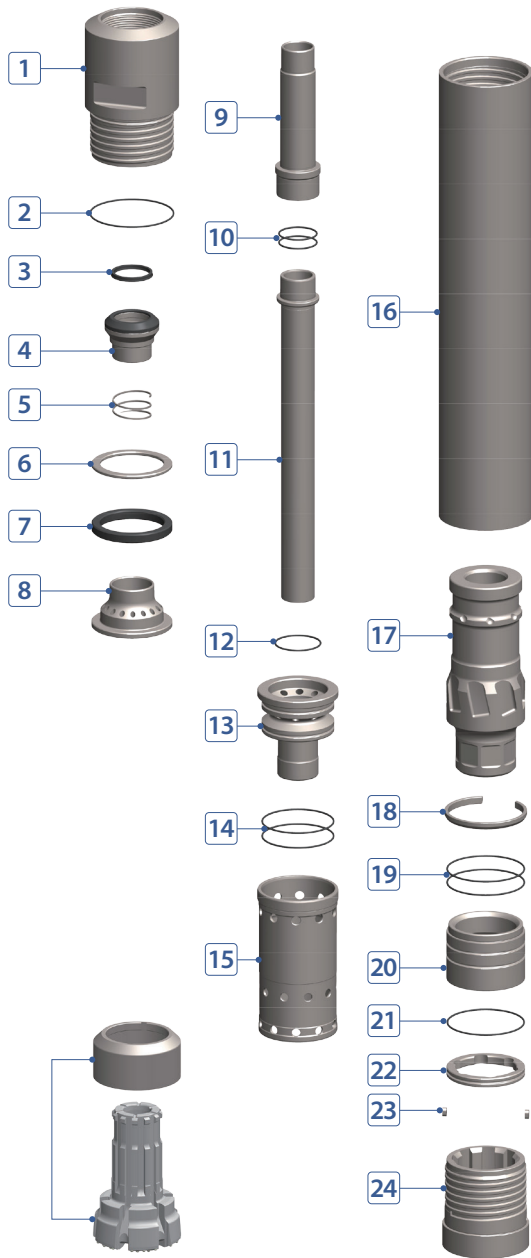


RC HAMMER & BIT

WRC100 REVERSE CIRCULATION HAMMER



COMPONENT PART



No.	DESCRIPTION	Q'TY	PART #
1	Back Head	1	R100-06-E01000
2	Back Head O-Ring	1	R100-06-E02000
3	Air Check Valve Seal (Buffering)	1	R100-06-E03000
4	Air Check Valve	1	R100-06-E06000
5	Air Check Valve Spring	1	R100-06-E07000
6	Make-Up Ring Washer (Steel)	1	R100-06-E09000
7	Make-Up Ring (Buffering)	1	R100-06-E12000
8	Air Guide	1	R100-06-E13000
9	Sample Tube Top for Wear	1	R100-06-E16000
10	Sample Tube Top for Wear O-Ring	2	R100-06-E17000
11	Sample Tube Bottom for Wear	1	R100-06-E18000
12	Air Distributor Inner O-Ring	1	R100-06-E19000
13	Air Distributor	1	R100-06-E20000
14	Air Distributor Outer O-Ring	2	R100-06-E21000
15	Cylinder	1	R100-06-E28000
16	Wear Sleeve	1	R100-06-E25000
17	Piston	1	R100-06-E26000
18	Piston Stop Ring (Steel)	1	R100-06-E59000
19	Bearing O-Ring	2	R100-06-E30000
20	Bearing	1	R100-06-E29000
21	Bit Retainer O-Ring	1	R100-06-E32000
22	Bit Retainer	1	R100-06-E33000
23	Locking Key	2	R100-06-E36000
24	Chuck (Driving Sub)	1	R100-06-E48000
*	Shroud	1	-
*	WRC100 Bit	1	-

HAMMER SPECIFICATIONS

Length (w/o drill bit)	62.83"	1,596 mm
Outside Diameter	9.87"	250.8 mm
Weight	840 lbs.	381 kg
Piston Weight	164.3 lbs.	74.5 kg
Hole Size	10" ~ 12"	254 ~ 305 mm
Connection	7" Matrix	

AIR CONSUMPTION CHART

