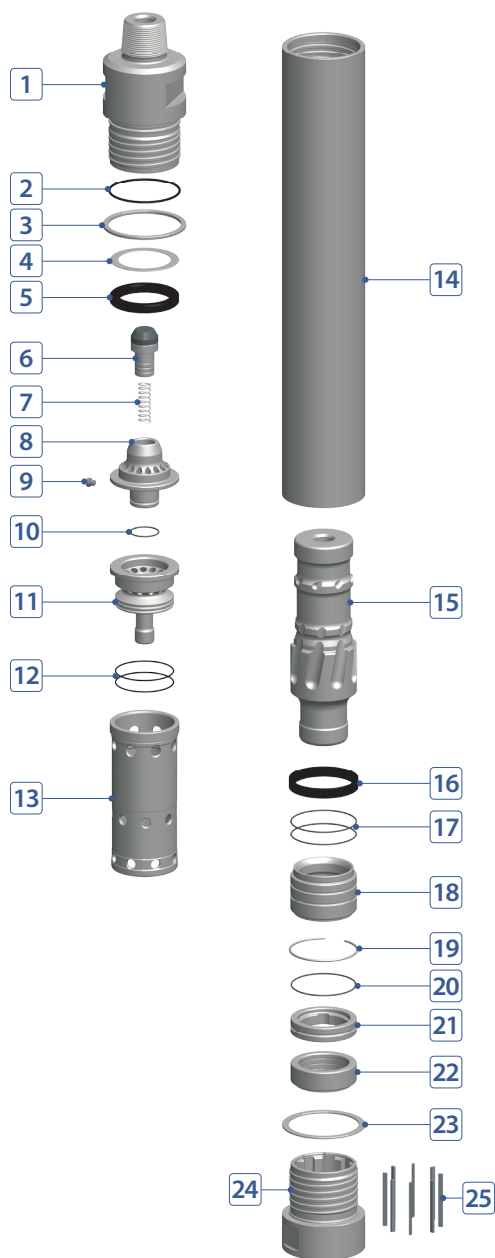


[NO FOOT VALVE TYPE]

COMPONENT PART



No.	DESCRIPTION	Q'TY	PART #
1	Back Head	1	T120-02-A01FRP
2	Back Head O-Ring	1	T120-02-A03000
3	Back Head Washer	1	T120-02-A02000
4	Buffering Washer	1	T120-02-A05000
5	Buffering	1	T120-02-A07000
6	Air Check Valve	1	T120-02-A09000
7	Air Check Valve Spring	1	T120-02-A10000
8	Air Guide	1	T120-02-A11000
9	Air Guide Plug (Choke)	1	T120-02-A13000
10	Air Guide O-Ring	1	T120-02-A14000
11	Air Distributor	1	T120-02-A15000
12	Air Distributor O-Ring	2	T120-02-A16000
13	Cylinder	1	T120-02-A17000
14	Wear Sleeve	1	T120-02-A25000
15	Piston	1	T120-02-A26000
16	Piston Stop Ring (Buffering)	1	T120-02-A28000
17	Bearing O-Ring	2	T120-02-A32000
18	Bearing	1	T120-02-A31SDK
19	Bearing Stop Ring (Key)	1	T120-02-A34000
20	Bit Retainer O-Ring	1	T120-02-A37000
21	Bit Retainer	1	T120-02-A36SDK
22	Guide Sleeve	1	T120-02-A38SDK
23	Chuck Washer	1	T120-02-A39000
24	Chuck	1	T120-02-A41SDK
25	Drive Pin	8	T120-02-A44SDK

HAMMER SPECIFICATIONS

Length (w/o drill bit)	71.49"	1,816 mm
Outside Diameter	10.35"	263 mm
Weight	1,221 lbs.	554 kg
Piston Weight	254 lbs.	115 kg
Hole Size	12" ~ 17-1/2"	304 ~ 445 mm
Connection	Std. 6-5/8" API Reg Pin	

AIR CONSUMPTION CHART

