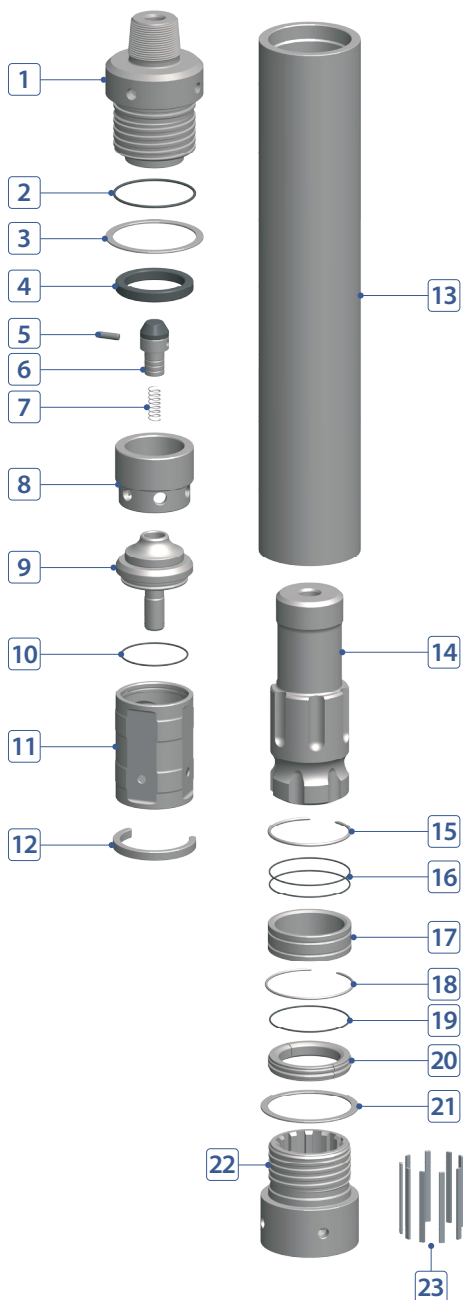


# DTH HAMMER

## WCN125 12" HAMMER WITH NUMA125 SHANK



### COMPONENT PART



No.	DESCRIPTION	Q'TY	PART #
1	Back Head	1	W125-02-A01FRP
2	Back Head O-Ring	1	W125-02-A03000
3	Back Head Washer	1	W125-02-A02000
4	Make-Up Rubber (Buffering)	1	W125-02-A07000
5	Plug (Choke)	1	W125-02-A08000
6	Air Check Valve	1	W125-02-A09000
7	Air Check Valve Spring	1	W125-02-A10000
8	Air Guide	1	W125-02-A11000
9	Air Distributor	1	W125-02-A15000
10	Air Distributor O-Ring	1	W125-02-A16000
11	Cylinder	1	W125-02-A17000
12	Cylinder Stop Ring (Steel)	1	W125-02-A43000
13	Wear Sleeve	1	W125-02-A25000
14	Piston	1	W125-02-A26000
15	Piston Stop Ring (Key)	1	W125-02-A29000
16	Bearing O-Ring	2	W125-02-A32000
17	Bearing	1	W125-02-A31000
18	Bearing Stop Ring (Key)	1	W125-02-A34000
19	Bit Retainer O-Ring	1	W125-02-A37000
20	Bit Retainer	1	W125-02-A36000
21	Chuck Washer	1	W125-02-A39000
22	Chuck (Drive Sub)	1	W125-02-A41000
23	Drive Pin	10	W125-02-A44000

### HAMMER SPECIFICATIONS

Length (w/o drill bit)	69.6"	1,768 mm
Outside Diameter	11.22"	285 mm
Weight	1,422 lbs.	645 kg
Piston Weight	287.5 lbs.	130.4 kg
Hole Size	12" ~ 17-1/2"	302 ~ 445 mm
Connection	Std. 6-5/8" API Reg Pin	

### AIR CONSUMPTION CHART

