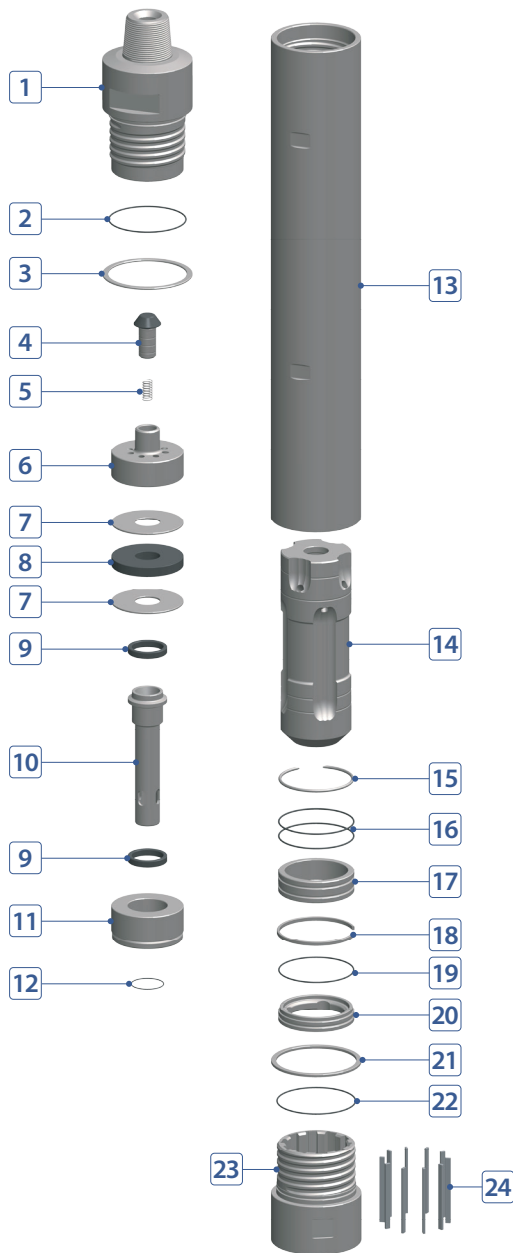


DTH HAMMER

WCH125 12" HAMMER WITH NUMA125 SHANK



COMPONENT PART



No.	DESCRIPTION	Q'TY	PART #
1	Back Head	1	H125-01-A01FRP
2	Back Head O-Ring	1	H121-01-A03000
3	Breakout Washer (Back Head)	1	H125-01-A02000
4	Air Check Valve	1	H121-01-A09NUM
5	Air Check Valve Spring	1	H121-01-A10NUM
6	Air Driverter	1	H121-01-A11NUM
7	Buffering Washer	2	H121-01-A05NUM
8	Make-up Ring (Buffering)	1	H121-01-A07NUM
9	Control Tube Buffering	2	H121-01-A21NUM
10	Control Tube (Tube)	1	H121-01-A23NUM
11	Control Tube Holder (Tube Guide)	1	H121-01-A19NUM
12	Control Tube Holder O-Ring	1	H121-01-A20000
13	Wear Sleeve	1	H125-01-A25NUM
14	Piston	1	H121-01-A26NUM
15	Piston Stop Ring (Key)	1	H125-01-A29NUM
16	Bearing O-Ring	2	H125-01-A32000
17	Bearing	1	H125-01-A31NUM
18	Bearing Stop Ring (Key)	1	H125-01-A34NUM
19	Bit Retainer O-Ring	1	H125-01-A37000
20	Bit Retainer	1	H125-01-A36NUM
21	Chuck Washer	1	H125-01-A39NUM
22	Chuck O-Ring	1	H125-01-A40000
23	Chuck	1	H125-01-A41NUM
24	Drive Pin (1set = 10P)	10	H125-01-A44NUM

HAMMER SPECIFICATIONS

Length (w/o drill bit)	74.17"	1,884 mm
Outside Diameter	10.82"	275 mm
Weight	1,362 lbs.	618 kg
Piston Weight	274.5 lbs.	124.5 kg
Hole Size	12" ~ 17-1/2"	304 ~ 445 mm
Connection	Std. 6-5/8" API Reg Pin	

AIR CONSUMPTION CHART

